

IOWA DEPARTMENT OF CORRECTIONS INSTITUTIONS



Mount Pleasant Correctional Facility

Persons interested in employment opportunities within the Mount Pleasant Correctional Facility should visit the Iowa Department of Corrections website at <http://www.doc.state.ia.us>. For questions regarding employment at the Mount Pleasant Correctional Facility you may contact our Personnel Director at (319) 385-9511. The facility is located at 1200 East Washington St, Mount Pleasant, IA 52641.



Newton Correctional Facility

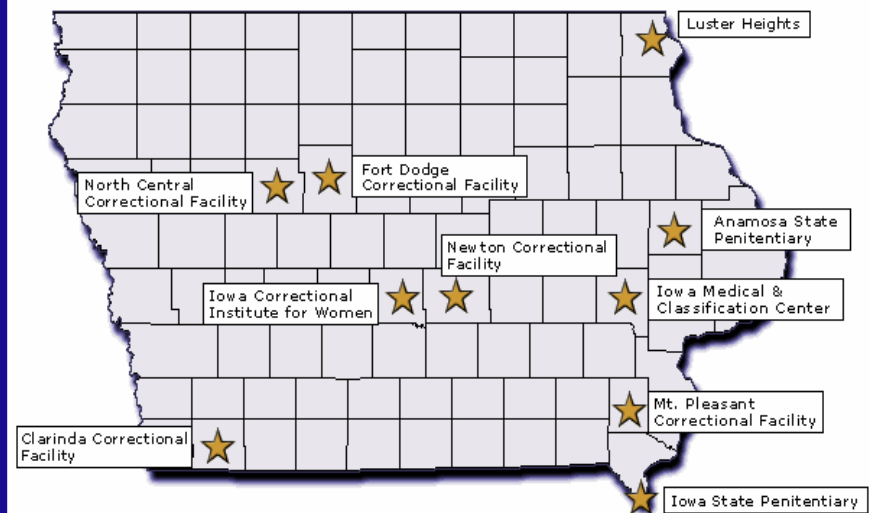
Persons interested in employment opportunities within the Newton Correctional Facility should visit the Iowa Department of Corrections website at <http://www.doc.state.ia.us>. For questions regarding employment at the Newton Correctional Facility you may contact our Personnel Director at (641) 792-7552. The facility is located at 307 S 60th Ave West, Newton, IA 50208.



North Central Correctional Facility

Persons interested in employment opportunities within the North Central Correctional Facility should visit the Iowa Department of Corrections website at <http://www.doc.state.ia.us>. For questions regarding employment at the North Central Correctional Facility you may contact our Personnel Director at (712) 297-7521. The facility is located at 313 Lanedale, Rockwell City, IA 50579.

Iowa Department of Corrections



www.doc.state.ia.us

**An Equal Opportunity / Affirmative
Action Employer**



John Baldwin, Director

**Vision:
An Iowa With No
More Victims**

About The Department

The Department of Corrections is a public safety agency within the executive branch of state government charged with the supervision, custody, and correctional programming of convicted adult offenders who are sentenced by the state courts for a period of incarceration in state prisons.

Iowa's adult correctional system carries out its charge of protecting the public through a continuum of evidence-based services and interventions. This continuum of offender services is designed with recognition of the ultimate release of most offenders. The effective and efficient management of offenders in accordance with their risk and criminogenic need (those needs that contribute to criminality) is accomplished through targeted programming, release preparation, and transition services back into the community.

The Department operates 9 Prisons, 10 Prison Farms, and 23 Community-Based Correctional Facilities. We employ 3,000 staff at the prisons, which are responsible for the supervision, custody and treatment of approximately 8,500 offenders.

IOWA DEPARTMENT OF CORRECTIONS INSTITUTIONS



**Iowa
Correctional
Institution
for Women**

Persons interested in employment opportunities within the Iowa Correctional Institution for Women should visit the Iowa Department of Corrections website at <http://www.doc.state.ia.us>. For questions regarding employment at the Iowa Correctional Institution for Women you may contact our Personnel Director at (515) 967-4236. The facility is located at 300 Elm Ave SW, Mitchellville, IA 50169.



**Iowa Medical
& Classification
Center**

Persons interested in employment opportunities within the Iowa Medical & Classification Center should visit the Iowa Department of Corrections website at <http://www.doc.state.ia.us>. For questions regarding employment at the Iowa Medical & Classification Center you may contact our Personnel Director at (319) 626-2391. The facility is located at 2700 Coral Ridge Avenue, Coralville, IA 52241



**Iowa
State
Penitentiary**

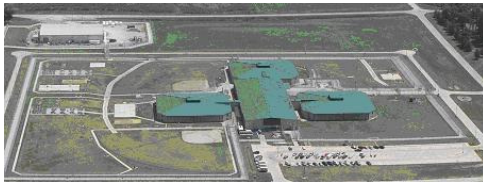
Persons interested in employment opportunities within the Iowa State Penitentiary should visit the Iowa Department of Corrections website at <http://www.doc.state.ia.us>. For questions regarding employment at the Iowa State Penitentiary you may contact our Personnel Director at (319) 372-5432. The facility is located at 31 G Avenue, Fort Madison, IA 52627.

IOWA DEPARTMENT OF CORRECTIONS INSTITUTIONS



Anamosa State Penitentiary

Persons interested in employment opportunities within the Anamosa State Penitentiary should visit the Iowa Department of Corrections website at <http://www.doc.state.ia.us>. For questions regarding employment at the Anamosa State Penitentiary you may contact our Personnel Director at (319) 462-3504. The facility is located at 406 North High St, Anamosa, IA 52205.



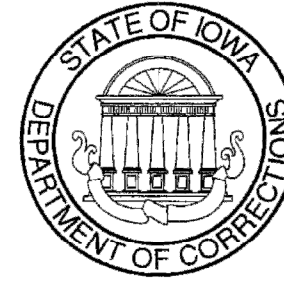
Clarinda Correctional Facility

Persons interested in employment opportunities within the Clarinda Correctional Facility should visit the Iowa Department of Corrections website at <http://www.doc.state.ia.us>. For questions regarding employment at the Clarinda Correctional Facility you may contact our Personnel Director at (712) 542-5634. The facility is located at 1800 N 16th, Clarinda, IA 51632.



Fort Dodge Correctional Facility

Persons interested in employment opportunities within the Fort Dodge Correctional Facility should visit the Iowa Department of Corrections website at <http://www.doc.state.ia.us>. For questions regarding employment at the Fort Dodge Correctional Facility you may contact our Personnel Director at (515) 574-4700. The facility is located at 1550 L Street, Fort Dodge, IA 50501.



How to Apply

The Department of Corrections lists all job openings and internship opportunities on the Department of Corrections Website, which can be accessed at <http://www.doc.state.ia.us>

If you are interested in job vacancies at a particular prison, please use the contact information included in this brochure.

Continuously Open Jobs

The job vacancies for [Correctional Officer](#) and [Registered Nurse](#) are available for application at any time.

Loan Forgiveness

The State of Iowa Nursing Education Loan Forgiveness Program helps address Iowa's nursing shortage by repaying the student loans of nursing professionals agreeing to work in Iowa upon graduation.

A borrower of a Federal Perkins Loan is eligible to have up to 100 percent of the loan cancelled for serving full-time as a correctional officer.

The recently enacted College Cost Reduction and Access Act (CCRAA) creates a new loan forgiveness option for borrowers who hold public service jobs.

IOWA DEPARTMENT OF CORRECTIONS

POSITION LISTING AND PAY GRADES

Position	Position #	Pay Grade	Pay Plan	Effective 6/25/2010— 12/23/2010	Effective 12/24/2010— 6/23/2011
				Annual Pay Range	Annual Pay Range
ACCOUNTANT 2	00311	26	014	\$39,457.60 - \$59,945.60	\$39,852.80 - \$60,548.80
ACCOUNTANT/AUDITOR 1	00309	22	014	\$33,467.20 - \$49,441.60	\$33,800.00 - \$49,940.80
ACCOUNTING CLERK 2	00306	17	014	\$26,873.60 - \$39,145.60	\$27,144.00 - \$39,540.80
ACCOUNTING TECHNICIAN 1	00290	17	014	\$26,873.60 - \$39,145.60	\$27,144.00 - \$39,540.80
ACCOUNTING TECHNICIAN 2	00292	20	014	\$30,680.00 - \$44,948.80	\$30,992.00 - \$45,406.40
ACCOUNTING TECHNICIAN 3	00294	23	014	\$34,964.80 - \$51,812.80	\$35,318.40 - \$52,332.80
ACTIVITIES SPECIALIST 1	82110	25	014	\$38,084.80 - \$56,971.20	\$38,459.20 - \$57,532.80
ACTIVITIES SPECIALIST 2	82111	28	014	\$43,222.40 - \$65,811.20	\$43,659.20 - \$66,476.80
ADMIN ASSISTANT 1	00708	21	014	\$32,052.80 - \$47,132.80	\$32,364.80 - \$47,611.20
ADMIN ASSISTANT 1	90708	21	000	\$31,428.80 - \$46,217.60	\$31,428.80 - \$46,217.60
ADMIN ASSISTANT 2	00709	24	014	\$36,899.20 - \$54,246.40	\$37,273.60 - \$54,787.20
ADMIN LAW JUDGE 2	00791	38	014	\$73,299.20 - \$104,332.80	\$74,027.20 - \$105,372.80
ADMIN OF NURSING	82041	37	000	\$68,598.40 - \$97,635.20	\$68,598.40 - \$97,635.20
BUDGET ANALYST 2	00722	26	014	\$39,457.60 - \$59,945.60	\$39,852.80 - \$60,548.80
BUDGET ANALYST 3	00723	30	014	\$46,592.00 - \$72,259.20	\$47,049.60 - \$72,987.20
CHAPLAIN	03310	28	010	\$42,577.60 - \$64,542.40	\$42,993.60 - \$65,187.20
CLERK	00011	12	014	\$21,673.60 - \$30,888.00	\$21,881.60 - \$31,200.00
CLERK-SPECIALIST	00018	18	014	\$27,955.20 - \$40,996.80	\$28,225.60 - \$41,412.80
CLINICAL DIETITIAN	07344	26	014	\$39,457.60 - \$59,945.60	\$39,852.80 - \$60,548.80
CORRECTIONAL BLDG SVCS COORD	87313	23	014	\$34,964.80 - \$51,812.80	\$35,318.40 - \$52,332.80
CORRECTIONAL COUNSELOR	86419	28	010	\$42,577.60 - \$64,542.40	\$42,993.60 - \$65,187.20
CORRECTIONAL FARM MANAGER	85032	25	014	\$38,084.80 - \$56,971.20	\$38,459.20 - \$57,532.80
CORRECTIONAL FOOD SERVICE	87237	24	014	\$36,899.20 - \$54,246.40	\$37,273.60 - \$54,787.20
CORRECTIONAL OFFICER	86406	23	014	\$34,964.80 - \$51,812.80	\$35,318.40 - \$52,332.80
CORRECTIONAL SECURITY DIRECTOR	86416	34	000	\$55,577.60 - \$85,529.60	\$55,577.60 - \$85,529.60
CORRECTIONAL SECURITY MANAGER	86415	30	000	\$45,676.80 - \$70,844.80	\$45,676.80 - \$70,844.80
CORRECTIONAL SUPERVISOR 1	86410	27	000	\$40,456.00 - \$61,297.60	\$40,456.00 - \$61,297.60
CORRECTIONAL SUPERVISOR 2	86411	29	000	\$44,366.40 - \$67,516.80	\$44,366.40 - \$67,516.80
CORRECTIONAL TRADES LEADER	88018	23	014	\$39,457.60 - \$51,812.80	\$39,852.80 - \$52,332.80
CORRECTIONAL TREATMENT	86421	34	000	\$55,577.60 - \$85,529.60	\$55,577.60 - \$85,529.60
CORRECTIONAL TREATMENT	86420	30	000	\$45,676.80 - \$70,844.80	\$45,676.80 - \$70,844.80
CUSTODIAL WORKER	07005	13	014	\$22,776.00 - \$32,240.00	\$23,004.80 - \$32,572.80
DENTAL ASSISTANT	82220	17	014	\$26,873.60 - \$39,145.60	\$27,144.00 - \$39,540.80
DENTAL HYGIENIST	82222	25	014	\$38,084.80 - \$56,971.20	\$38,459.20 - \$57,532.80
DENTIST	82505	40	000	\$78,998.40 - \$112,444.80	\$78,998.40 - \$112,444.80
DEPUTY CORRECTIONS PROG	06444	43	000	\$90,916.80 - \$129,292.80	\$90,916.80 - \$129,292.80
DEPUTY SUPERINTENDENT	06425	36	000	\$61,214.40 - \$93,828.80	\$61,214.40 - \$93,828.80
DIR DEPT OF CORRECTIONS	09506	07	024	\$100,840.00 - \$154,300.00	\$100,840.00 - \$154,300.00
DIR OF ACTIVITIES	02115	31	000	\$48,006.40 - \$74,339.20	\$48,006.40 - \$74,339.20
DRIVER	08205	16	014	\$25,771.20 - \$37,211.20	\$26,020.80 - \$37,585.60
DRUG ABUSE COUNSELOR 2	83252	23	014	\$34,964.80 - \$51,812.80	\$35,318.40 - \$52,332.80

DEFERRED COMPENSATION

Deferred compensation is a long-term savings program emphasizing preparation for financial security during retirement years. You may elect to defer a portion of your income each month into a variety of savings program. This money is not subject to state or federal taxes until withdrawn.

AUTOMATIC DIRECT DEPOSIT OF PAYROLL CHECKS

The State offers automatic direct deposit of your payroll check into an account at the financial institution of your choice.

CREDIT UNION

You are eligible to become a member of Community Choice Credit Union and may elect to join through payroll deduction. Applications for low-interest loans may be made to the Credit Union if you have been a state employee for at least six months.

EDUCATION AND TRAINING PROGRAMS

The Department provides a five-week training program for all new employees who work with offenders. In-service training is provided to all employees and there are opportunities to take advantage of training programs away from your institution.

MEALS

Institution employees are provided a free mid-shift meal at each institution.

UNIFORMS

Uniforms are provided for those employees required to wear them. Uniforms include appropriate outdoor wear when required to perform your duties.

SAFETY EQUIPMENT

Safety equipment appropriate to your job duties will be issued where required.

PERSONAL PROPERTY LOSS REIMBURSEMENT

If your personal property is damaged in the performance of your duties, you may be reimbursed for that loss up to a set amount.

EMPLOYEE LIABILITY PROTECTION

You have liability protection while performing your duties unless you are purposefully negligent or intentionally act in a wrongful manner. This protection includes legal representation and payment of any financial damages that may be awarded.

EMPLOYEE ASSISTANCE PROGRAM

A counseling/evaluation program is available for any employee or family member with problems that may be interfering with successful job performance. Initial assessments are available at no cost and ongoing services are available at sliding scale fees.

IOWA PRISON INDUSTRIES

State employees may purchase the following products and services through Iowa Prison Industries at a moderate cost: soap products, printed products, metal signs, furniture, clothing, custom woodshop products, and upholstery services.

IOWA DEPARTMENT OF CORRECTIONS EMPLOYEE FRINGE BENEFITS

VACATION

Length of employment with the State determines the amount of vacation leave earned, as follows:

0-4 years = 10 days per year	20-24 years = 22 days per year
5-11 years = 15 days per year	25+ years = 25 days per year
12-19 years = 20 days per year	

Some contract-covered employees earn vacation in a somewhat different manner.

SICK LEAVE

Paid sick leave is accumulated based on the sick leave balance and bargaining status. No maximum. Employees may exchange unused sick leave hours at the hourly rate up to a maximum of \$2,000 and for payment of health insurance premiums upon retirement. Permanent employees who have earned 240 hours of sick leave may elect to exchange a specific amount of sick leave for 4 hours of vacation each month in which they do not use any sick leave. This allows an employee to earn an additional 6 days vacation per year. Sick leave may also be used to care for family members who are ill or injured, to attend funerals of family members, and to serve as a pallbearer.

HOLIDAYS

Currently there are nine paid state holidays each year. Due to staffing needs, many employees are required to work on holidays but will receive holiday pay or time off for working a holiday.

INSURANCES

Health insurance is available to each full time employee. Coverage for family members is partially paid by the employee. Various plans and premiums are available. Married couples both employed by the State of Iowa are eligible for reduced premium rates on family coverage.

Single and family dental coverage is available. The State pays the cost of a single plan, but you may purchase family coverage.

The State of Iowa provides \$20,000 free life insurance for each employee. You have the option to purchase additional term life insurance.

The State provides disability insurance at no cost to the employee after one month of employment with benefits based on disability and length of service.

You may choose to pay your portion of health, dental, and life insurance premiums or the care expenses for a dependent child or adult with salary dollars that are not subject to federal or state income taxes or social security taxes.

IOWA PUBLIC EMPLOYEE'S RETIREMENT SYSTEM

Starting with your first paycheck, it is mandatory that a percentage of your gross pay be deducted from each check. The State also contributes a percentage for your retirement program. If you leave state employment, the portion that has been withheld from your paycheck plus any accumulated interest is refundable to you. The money may be left in IPERS if you leave employment before the age of 55 after four years of service or retire at age 65 with less than 5 years of service. Upon retirement, you are eligible to receive a monthly benefit based on the accumulated contributions paid by you and your employer or take a lump sum payment. Employees in protected occupation job classes may retire with full benefits at age 55 if they have 22 years of service.

WORKER'S COMPENSATION

Medical and hospital expenses are paid for injuries or illnesses incurred while on duty.

IOWA DEPARTMENT OF CORRECTIONS POSITION LISTING AND PAY GRADES

Position	Position #	Pay Grade	Pay Plan	Effective 6/25/2010— 12/23/2010	Effective 12/24/2010— 6/23/2011
				Annual Pay Range	Annual Pay Range
ELECTRICIAN	08326	25	014	\$43,222.40 - \$56,971.20	\$43,659.20 - \$57,532.80
ELECTRICIAN	88326	25	014	\$43,222.40 - \$56,971.20	\$43,659.20 - \$57,532.80
ELECTRONIC ENGINEER TECHNICIAN	04742	28	014	\$43,222.40 - \$65,811.20	\$43,659.20 - \$66,476.80
ELECTRONIC ENGINEER TECHNICIAN	84742	28	014	\$43,222.40 - \$65,811.20	\$43,659.20 - \$66,476.80
ELECTRONICS TECHNICIAN	08672	21	014	\$32,052.80 - \$47,132.80	\$32,364.80 - \$47,611.20
ELECTRONICS TECHNICIAN	88672	21	014	\$32,052.80 - \$47,132.80	\$32,364.80 - \$47,611.20
EXEC OFF 1	00710	29	014	\$45,260.80 - \$68,868.80	\$45,718.40 - \$69,555.20
EXEC OFF 1	80710	29	014	\$45,260.80 - \$68,868.80	\$45,718.40 - \$69,555.20
EXEC OFF 1	90710	29	000	\$44,366.40 - \$67,516.80	\$44,366.40 - \$67,516.80
EXEC OFF 2	00711	32	014	\$51,376.00 - \$79,456.00	\$51,896.00 - 80,246.40
EXEC OFF 3	00712	35	014	\$59,488.00 - \$91,499.20	\$60,091.20 - \$92,414.40
EXEC OFF 3	90712	35	000	\$58,323.20 - \$89,710.40	\$58,323.20 - \$89,710.40
EXEC OFF 4	90713	38	000	\$71,864.00 - \$102,294.40	\$71,864.00 - \$102,294.40
EXEC OFF 5	90714	41	000	\$82,763.20 - \$117,728.00	\$82,763.20 - \$117,728.00
EXEC SECRETARY	15005	27	000	\$40,456.00 - \$61,297.60	\$40,456.00 - \$61,297.60
FACILITIES ENGINEER 2	04257	34	000	\$55,577.60 - \$85,529.60	\$55,577.60 - \$85,529.60
FARM LEADER	85015	20	014	\$30,680.00 - \$44,948.80	\$30,992.00 - \$45,406.40
FOOD SERVICES ASSISTANT	87250	26	000	\$38,688.00 - \$58,760.00	\$38,688.00 - \$58,760.00
FOOD SERVICES DIRECTOR 2	87253	27	000	\$40,456.00 - \$61,297.60	\$40,456.00 - \$61,297.60
FOOD SERVICES DIRECTOR 3	87254	32	000	\$50,377.60 - \$77,896.00	\$50,377.60 - \$77,896.00
HEALTH SERVICES ADMINISTRATOR	15276	57	000	\$178,734.40 - \$254,363.20	\$178,734.40 - \$254,363.20
HUMAN RESOURCES ASSOCIATE	00772	24	000	\$36,171.20 - \$53,185.60	\$36,171.20 - \$53,185.60
HUMAN RESOURCES TECHNICAL	00770	20	000	\$26,353.60 - \$44,075.20	\$27,144.00 - \$44,075.20
INFO TECH SPECIALIST 2	00119	26	014	\$39,457.60 - \$59,945.60	\$39,852.80 - \$60,548.80
INFO TECH SPECIALIST 3	00120	29	014	\$45,260.80 - \$68,868.80	\$45,718.40 - \$69,555.20
INFO TECH SPECIALIST 4	00121	32	014	\$51,376.00 - \$79,456.00	\$51,896.00 - 80,246.40
INFO TECH SPECIALIST 5	00122	35	014	\$59,488.00 - \$91,499.20	\$60,091.20 - \$92,414.40
INFO TECH SPECIALIST 5	90122	35	000	\$58,323.20 - \$89,710.40	\$58,323.20 - \$89,710.40
INFO TECH SUPPORT WORKER	00115	17	014	\$26,873.60 - \$39,145.60	\$27,144.00 - \$39,540.80
INFO TECH SUPPORT WORKER	00117	21	014	\$32,052.80 - \$47,132.80	\$32,364.80 - \$47,611.20
INSTITUTIONAL SUPERINTENDENT	15272	42	000	\$61,214.40 - \$123,406.40	\$63,065.60 - \$123,406.40
INVESTIGATOR 2	00696	26	014	\$39,457.60 - \$59,945.60	\$39,852.80 - \$60,548.80
INVESTIGATOR 3	00697	28	014	\$43,222.40 - \$65,811.20	\$43,659.20 - \$66,476.80
LICENSED PRACTICAL NURSE	82002	26	014	\$39,457.60 - \$59,945.60	\$39,852.80 - \$60,548.80
MAIL CLERK 2	00261	15	014	\$24,731.20 - \$35,630.40	\$24,980.80 - \$35,984.00
MAINTENANCE WORKER 2	08006	16	014	\$25,771.20 - \$37,211.20	\$26,020.80 - \$37,585.60
MANAGEMENT ANALYST 4	00737	33	014	\$53,976.00 - \$83,179.20	\$54,516.80 - \$84,011.20
MECHANIC	08375	22	014	\$38,084.80 - \$49,441.60	\$38,459.20 - \$49,940.80
MEDICAL TECHNOLOGIST	02215	25	009	\$37,544.00 - \$55,827.20	\$37,918.40 - \$56,388.80
NURSE PRACTITIONER	02027	36	014	\$62,441.60 - \$95,700.80	\$63,065.60 - \$96,657.60
NURSE SUPERVISOR 1	82023	31	000	\$48,006.40 - \$74,339.20	\$48,006.40 - \$74,339.20
NURSE SUPERVISOR 2	82022	33	000	\$52,915.20 - \$81,556.80	\$52,915.20 - \$81,556.80
NURSING SERVICES DIRECTOR	82035	35	000	\$58,323.20 - \$89,710.40	\$58,323.20 - \$89,710.40
NURSING UNIT COORDINATOR	82000	20	014	\$30,680.00 - \$44,948.80	\$30,992.00 - \$45,406.40

IOWA DEPARTMENT OF CORRECTIONS POSITION LISTING AND PAY GRADES

Position	Position #	Pay Grade	Pay Plan	Effective 6/25/2010— 12/23/2010	Effective 12/24/2010— 6/23/2011
				Annual Pay Range	Annual Pay Range
PHARMACIST	02226	35	014	\$59,488.00 - \$91,499.20	\$60,091.20 - \$92,414.40
PHARMACY ASSISTANT	02225	16	014	\$25,771.20 - \$37,211.20	\$26,020.80 - \$37,585.60
PHARMACY DIRECTOR	06440	40	000	\$78,998.40 - \$112,444.80	\$78,998.40 - \$112,444.80
PHYSICIAN	15186	55	000	\$88,462.40 - \$231,608.00	\$89,356.80 - \$231,608.00
PHYSICIAN ASSISTANT	02550	36	014	\$62,441.60 - \$95,700.80	\$63,065.60 - \$96,657.60
PHYSICIAN SUPERVISOR	15187	55	000	\$88,462.40 - \$231,608.00	\$89,356.80 - \$231,608.00
PLANT OPERATIONS MANAGER	88425	26	000	\$38,688.00 - \$58,760.00	\$38,688.00 - \$58,760.00
PLANT OPERATIONS MANAGER	88427	31	000	\$48,006.40 - \$74,339.20	\$48,006.40 - \$74,339.20
POLYGRAPHER	86400	30	014	\$46,592.00 - \$72,259.20	\$47,049.60 - \$72,987.20
POWER PLANT ENGINEER 3	08416	21	014	\$36,899.20 - \$47,132.80	\$37,273.60 - \$47,611.20
POWER PLANT ENGINEER 3	88416	21	014	\$36,899.20 - \$47,132.80	\$37,273.60 - \$47,611.20
POWER PLANT ENGINEER 4	08420	23	014	\$39,457.60 - \$51,812.80	\$39,852.80 - \$52,332.80
POWER PLANT ENGINEER 4	88420	23	014	\$39,457.60 - \$51,812.80	\$39,852.80 - \$52,332.80
POWER PLANT ENGR SUPERVISOR	88421	25	000	\$37,336.00 - \$55,848.00	\$37,336.00 - \$55,848.00
PROGRAM PLANNER 2	04022	26	014	\$39,457.60 - \$59,945.60	\$39,852.80 - \$60,548.80
PSYCHOLOGIST 2	83246	30	014	\$46,592.00 - \$72,259.20	\$47,049.60 - \$72,987.20
PSYCHOLOGIST 3	83248	32	014	\$51,376.00 - \$79,456.00	\$51,896.00 - \$80,246.40
PSYCHOLOGY ASSISTANT	03242	23	014	\$34,964.80 - \$51,812.80	\$35,318.40 - \$52,332.80
PUBLIC SERVICE EXECUTIVE 1	00781	29	000	\$44,366.40 - \$67,516.80	\$44,366.40 - \$67,516.80
PUBLIC SERVICE EXECUTIVE 2	00782	32	000	\$50,377.60 - \$77,896.00	\$50,377.60 - \$77,896.00
PUBLIC SERVICE EXECUTIVE 3	00784	35	000	\$58,323.20 - \$89,710.40	\$58,323.20 - \$89,710.40
PUBLIC SERVICE EXECUTIVE 4	00786	38	000	\$71,864.00 - \$102,294.40	\$71,864.00 - \$102,294.40
PUBLIC SERVICE EXECUTIVE 5	00787	41	000	\$82,763.20 - \$117,728.00	\$82,763.20 - \$117,728.00
PUBLIC SERVICE SUPERVISOR	00780	27	000	\$40,456.00 - \$61,297.60	\$40,456.00 - \$61,297.60
PURCHASING AGENT 1	00210	22	014	\$33,467.20 - \$49,441.60	\$33,800.00 - \$49,940.80
PURCHASING AGENT 2	00211	26	014	\$39,457.60 - \$59,945.60	\$39,852.80 - \$60,548.80
PURCHASING AGENT 3	00212	29	014	\$45,260.80 - \$68,868.80	\$45,718.40 - \$69,555.20
PURCHASING ASSISTANT	00205	18	014	\$27,955.20 - \$40,996.80	\$28,225.60 - \$41,412.80
RADIOLOGICAL TECHNOLOGIST	02209	20	014	\$30,680.00 - \$44,948.80	\$30,992.00 - \$45,406.40
RECEPTIONIST	00006	14	014	\$23,753.60 - \$33,800.00	\$23,982.40 - \$34,132.80
REGISTERED NURSE	82020	30	014	\$46,592.00 - \$72,259.20	\$47,049.60 - \$72,987.20
RESPIRATORY THERAPY TECHNICIAN	02200	23	014	\$34,964.80 - \$51,812.80	\$35,318.40 - \$52,332.80
SAFETY OFFICER	80761	26	014	\$39,457.60 - \$59,945.60	\$39,852.80 - \$60,548.80
SECRETARY 1	00025	17	014	\$26,873.60 - \$39,145.60	\$27,144.00 - \$39,540.80
SECRETARY 1	90025	17	000	\$26,353.60 - \$38,376.00	\$26,353.60 - \$38,376.00
SECRETARY 2	00026	20	014	\$30,680.00 - \$44,948.80	\$30,992.00 - \$45,406.40
SECRETARY 2	90026	20	000	\$30,076.80 - \$44,075.20	\$30,076.80 - \$44,075.20
SENIOR CORRECTIONAL OFFICER	86409	25	014	\$38,084.80 - \$56,971.20	\$38,459.20 - \$57,532.80
SENIOR STATE INDUSTRIES	86467	26	014	\$39,457.60 - \$59,945.60	\$39,852.80 - \$60,548.80
SOCIAL WORKER 3	03016	27	010	\$40,643.20 - \$61,318.40	\$41,059.20 - \$61,921.60
STATE INDUSTRIES PROD COORD	86469	28	014	\$43,222.40 - \$65,811.20	\$43,659.20 - \$66,476.80
STATE INDUSTRIES SALES	00920	32	000	\$50,377.60 - \$77,896.00	\$50,377.60 - \$77,896.00
STATE INDUSTRIES SALES REP	06460	23	014	\$34,964.80 - \$51,812.80	\$35,318.40 - \$52,332.80

IOWA DEPARTMENT OF CORRECTIONS POSITION LISTING AND PAY GRADES

Position	Position #	Pay Grade	Pay Plan	Effective 6/25/2010— 12/23/2010	Effective 12/24/2010— 6/23/2011
				Annual Pay Range	Annual Pay Range
STATE INDUSTRIES SUPERVISOR	86468	30	000	\$45,676.80 - \$70,844.80	\$45,676.80 - \$70,844.80
STATE INDUSTRIES TECHNICIAN	86465	25	014	\$38,084.80 - \$56,971.20	\$38,459.20 - \$57,532.80
STATISTICAL RESEARCH ANALYST	00744	25	014	\$38,084.80 - \$56,971.20	\$38,459.20 - \$57,532.80
STATISTICAL RESEARCH ANALYST	00746	29	014	\$45,260.80 - \$68,868.80	\$45,718.40 - \$69,555.20
STOREKEEPER 2	00236	16	014	\$25,771.20 - \$37,211.20	\$26,020.80 - \$37,585.60
STOREKEEPER 2	80236	16	014	\$25,771.20 - \$37,211.20	\$26,020.80 - \$37,585.60
STOREKEEPER 3	00237	19	014	\$29,328.00 - \$42,848.00	\$29,619.20 - \$43,284.80
STOREKEEPER 3	80237	19	014	\$29,328.00 - \$42,848.00	\$29,619.20 - \$43,284.80
TRAINING SPECIALIST 1	00763	27	000	\$33,467.20 - \$61,297.60	\$33,800.00 - \$61,297.60
TRAINING SPECIALIST 1	80763	27	000	\$33,467.20 - \$61,297.60	\$33,800.00 - \$61,297.60
TRAINING SPECIALIST 2	00768	30	000	\$45,676.80 - \$70,844.80	\$45,676.80 - \$70,844.80
TRANSPORT DRIVER	08210	18	014	\$32,052.80 - \$40,996.80	\$32,364.80 - \$41,412.80
TREATMENT SERVICES DIRECTOR	83235	31	000	\$48,006.40 - \$74,339.20	\$48,006.40 - \$74,339.20
TYPIST-ADVANCED	00013	15	014	\$24,731.20 - \$35,630.40	\$24,980.80 - \$35,984.00
UTILITY WORKER	00005	10	000	\$19,427.20 - \$27,435.20	\$19,427.20 - \$27,435.20