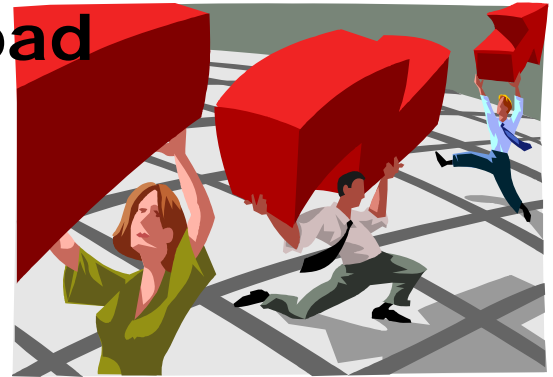


Lettie Prell  
Director of Research

Curt Smith  
Executive Assistant to the Director

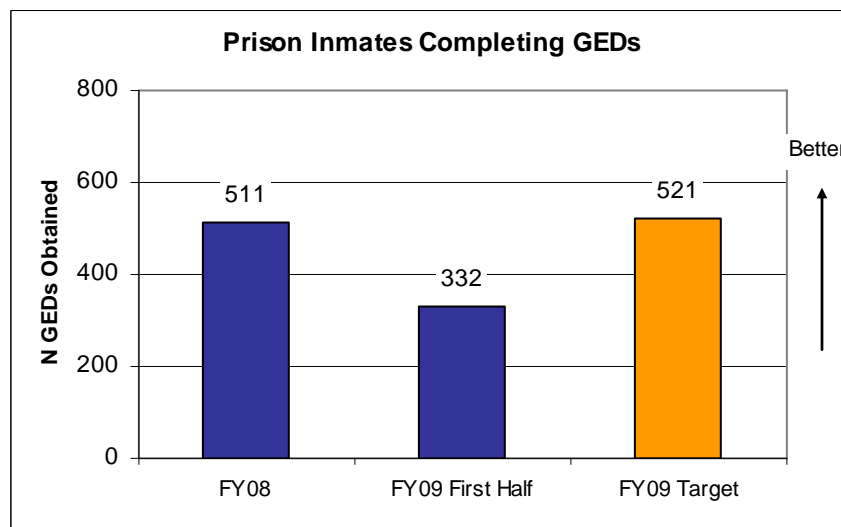


## Data Download



### IWD to Study the Effect of Prison Education on Employment

The Iowa Department of Corrections recently entered into a data sharing agreement with Iowa Workforce Development (IWD), the purpose of which is to better ascertain the effect of prison education on post-prison employment. This study is important because the DOC partners with community colleges to provide prison-based education, with a goal of increasing the numbers of inmates completing GEDs. We are demonstrating success toward that goal, but what we lack is empirical evidence showing the level of success that Iowa prison education programs have on Iowa offenders' employment success upon their return to communities here in the state.



Past national studies have found a correlation between education and recidivism, and a study of several states – including Iowa – found a correlation between private sector prison employment and recidivism.

Here in Iowa, jobs requiring higher levels of education and skills are projected to account for almost half of the job growth over the next decade. If through this study the Iowa prison GED program demonstrates a significant degree of success, it can serve as a valuable resource in advancing DOC's mission to reduce recidivism through successful offender reentry **and** in alleviating Iowa's growing skilled workforce shortage.